

Gross Living Area: 2410 sq. ft

[illegible]

Space	Area (sq. ft)	Calculation
1st floor (Living area)	1007	$\begin{aligned} & -((489.4 + 489.4) * (358.7 - 844.2) + (489.4 + 363.4) * (844.2 - 844.2) + (363.4 + 363.4) * (844.2 - 796.2) + (363.4 + 316.1) * (796.2 - 796.2) + (316.1 + 316.1) * (796.2 - 790.2) + (316.1 + 310.1) * (790.2 - 790.2) + (310.1 + 310.1) * (790.2 - 627.7) + (310.1 + 118.8) * (627.7 - 627.7) + (118.8 + 118.8) * (627.7 - 595) + (118.8 + 80.2) * (595 - 595) + (80.2 + 80.2) * (595 - 358.7) + (80.2 + 489.4) * (358.7 - 358.7)) * 0.5 * 0.00694 \end{aligned}$

2045 Atwell Glen Lane, Pineville, Mecklenburg County, North Carolina, United States, 28134

Gross Living Area: 2410 sq. ft

Level 1

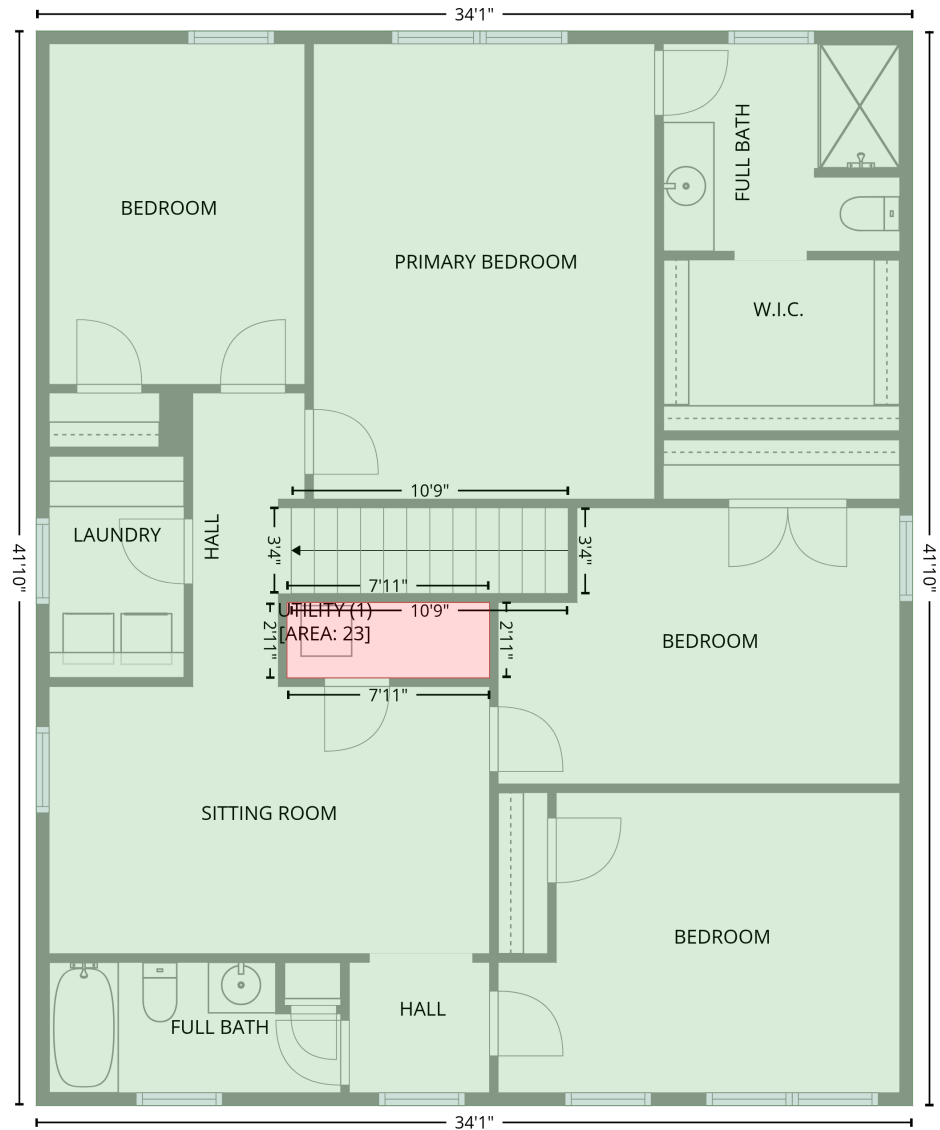
Space	Area (sq. ft)	Calculation
Coordinate Polygon Area Algorithm using inches		
PORCH (Non-living area)	96	$-((363.4 + 363.4) * (796.2 - 844.2) + (363.4 + 489.4) * (844.2 - 844.2) + (489.4 + 489.4) * (844.2 - 910) + (489.4 + 312.1) * (910 - 910) + (312.1 + 312.1) * (910 - 860.7) + (312.1 + 316.1) * (860.7 - 860.7) + (316.1 + 316.1) * (860.7 - 796.2) + (316.1 + 363.4) * (796.2 - 796.2)) * 0.5 * 0.00694$
PATIO (Non-living area)	377	$-((299.2 + 334.1) * (127.6 - 147.6) + (334.1 + 409.3) * (147.6 - 173.3) + (409.3 + 444.8) * (173.3 - 185.3) + (444.8 + 465.8) * (185.3 - 211.7) + (465.8 + 473.4) * (211.7 - 241.6) + (473.4 + 473.4) * (241.6 - 358.7) + (473.4 + 147) * (358.7 - 358.6) + (147 + 147) * (358.6 - 221.3) + (147 + 299.3) * (221.3 - 221.3) + (299.3 + 299.2) * (221.3 - 127.6)) * 0.5 * 0.00694$
PATIO (Non-living area)	30	$-((183.7 + 205) * (85.7 - 87.5) + (205 + 252.6) * (87.5 - 100.3) + (252.6 + 291.2) * (100.3 - 122.9) + (291.2 + 298.8) * (122.9 - 127.3) + (298.8 + 147) * (127.3 - 127.3) + (147 + 147) * (127.3 - 111.3) + (147 + 161.3) * (111.3 - 94) + (161.3 + 183.7) * (94 - 85.7)) * 0.5 * 0.00694$
COVERED PATIO (Non-living area)	99	$-((147 + 299.2) * (127.3 - 127.6) + (299.2 + 299.3) * (127.6 - 221.3) + (299.3 + 147) * (221.3 - 221.3) + (147 + 147) * (221.3 - 127.3)) * 0.5 * 0.00694$
GARAGE (Non-living area)	384	$-((118.8 + 118.8) * (595 - 627.7) + (118.8 + 310.1) * (627.7 - 627.7) + (310.1 + 310.1) * (627.7 - 790.2) + (310.1 + 316.1) * (790.2 - 790.2) + (316.1 + 316.1) * (790.2 - 860.7) + (316.1 + 80.2) * (860.7 - 860.7) + (80.2 + 80.2) * (860.7 - 595) + (80.2 + 118.8) * (595 - 595)) * 0.5 * 0.00694$

2045 Atwell Glen Lane, Pineville, Mecklenburg County, North Carolina, United States, 28134

Gross Living Area: 2410 sq. ft

Level 2

2nd floor
[AREA: 1403]



Space	Area (sq. ft)	Calculation
2nd floor (Living area)	1403	Coordinate Polygon Area Algorithm using inches $-((489.4 + 489.4) * (358.7 - 860.7) + (489.4 + 80.2) * (860.7 - 860.7) + (80.2 + 80.2) * (860.7 - 358.7) + (80.2 + 489.4) * (358.7 - 358.7)) * 0.5 * 0.00694 + -((291.8 + 197.3) * (625.7 - 625.7) + (197.3 + 197.3) * (625.7 - 660.9) + (197.3 + 291.8) * (660.9 - 660.9) + (291.8 + 291.8) * (660.9 - 625.7)) * 0.5 * 0.00694$
UTILITY (Non-living area)	23	$-((291.8 + 291.8) * (625.7 - 660.9) + (291.8 + 197.3) * (660.9 - 660.9) + (197.3 + 197.3) * (660.9 - 625.7) + (197.3 + 291.8) * (625.7 - 625.7)) * 0.5 * 0.00694$